

Villas Del Mirador

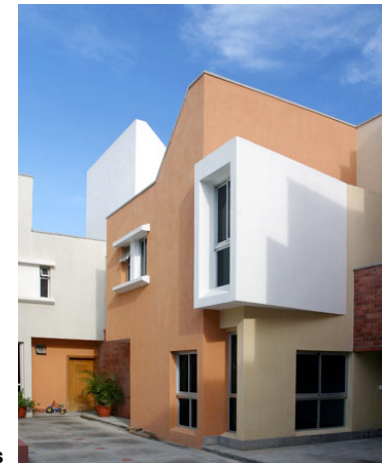
**Managuayabo
Santo Domingo
Republica Dominicana
Año de ejecucion: 2002
Area de lote:
Area de construccion:**



Managuayabo is located on the western part of the city of Santo Domingo, just north from Autopista Duarte, the country's main highway which links the capital city with the central and northern parts of the island -the most important productive areas in the country. Managuayabo's preferential location has prompted the establishment of important industrial production and service centers along with a fast-growing, unregulated population development within an environment defined both by great economic exchange and an extraordinary social mobility. As a result of said unregulated urban development characterized by the mixed use of the land with large wasteland areas in between, a large housing deficit has emerged.

In trying to cope with such rapid and spontaneous human settlement process, the authorities have engaged in a program of basic infrastructure development that includes running water, electricity and streets which in turn influences the development of new projects in so far as it encourages informal, unregulated, landscape-defining, urban intervention.

Within this context we have been asked to intervene a 3200-sq.mt lot with irregular topography in order to develop a market-oriented project according to the particular requirements of this type of intervention.



Arquitectura Planificación Interiores Construcción Consultores